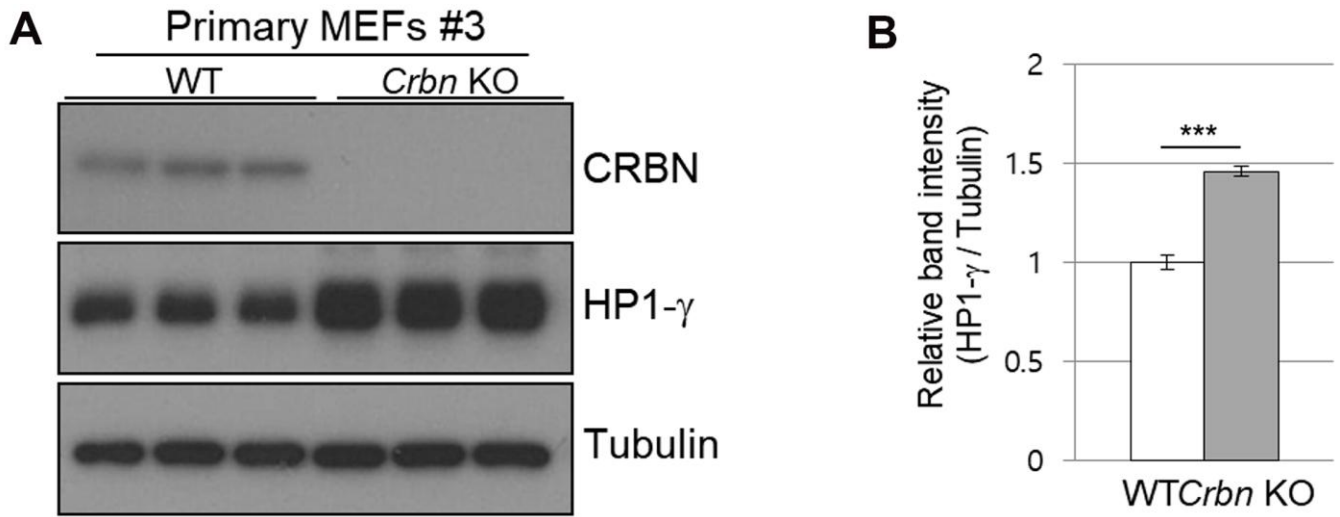
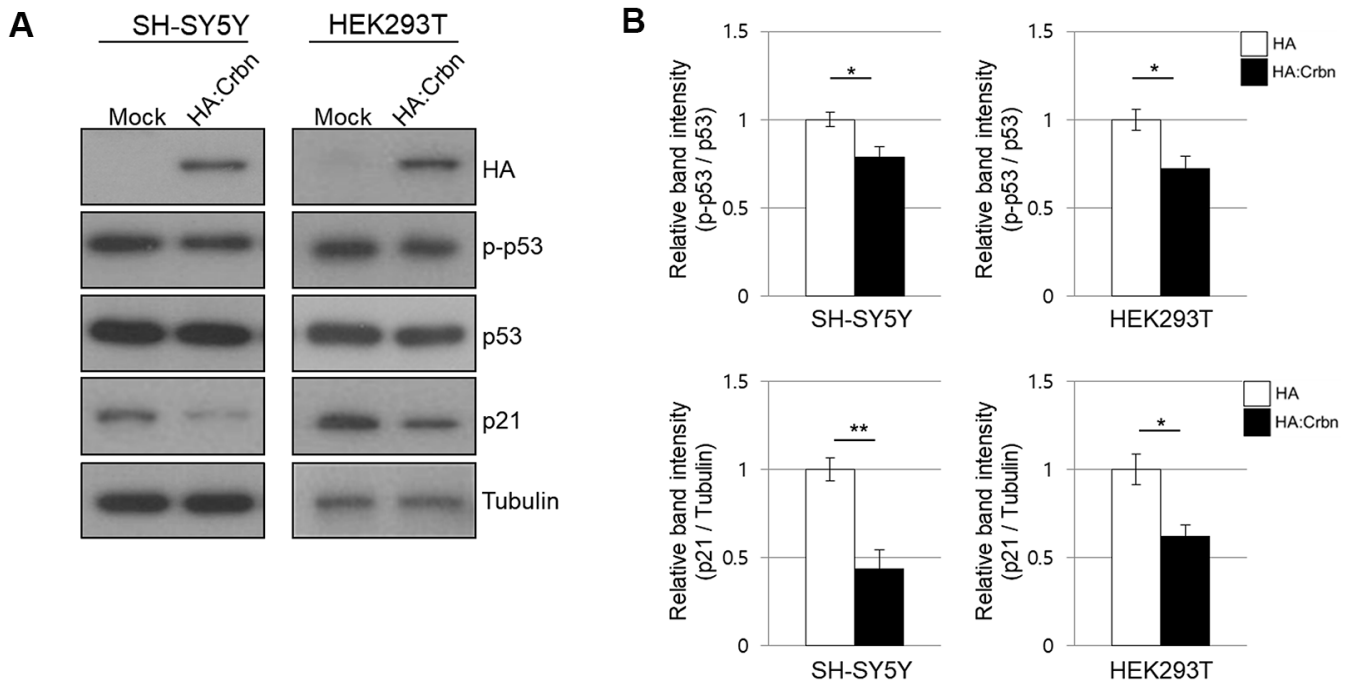


SUPPLEMENTARY FIGURES



**Supplementary Figure 1. The elevated protein level of HP1- $\gamma$  in primary CRBN KO mouse embryonic fibroblasts.** (A) Endogenous levels of proteins as determined by Western blot analysis using extracts from WT and CRBN KO MEFs. (B) Relative band intensities determined by densitometric analysis of HP1- $\gamma$  in blot A.



**Supplementary Figure 2. Ectopic overexpression of CRBN in SHSY5Y and HEK293T.** (A) The SHSY5Y and HEK293T cells were transiently transfected with HA:CRBN or empty vector. Cells were harvested after 24h and the protein lysates were subjected to immunoblotting with the anti-HA, anti-p53, anti-p-p53 (Ser18), anti-p21, and anti-Tubulin antibodies. (B) Relative band intensities determined by densitometric analysis of each protein in blot A.