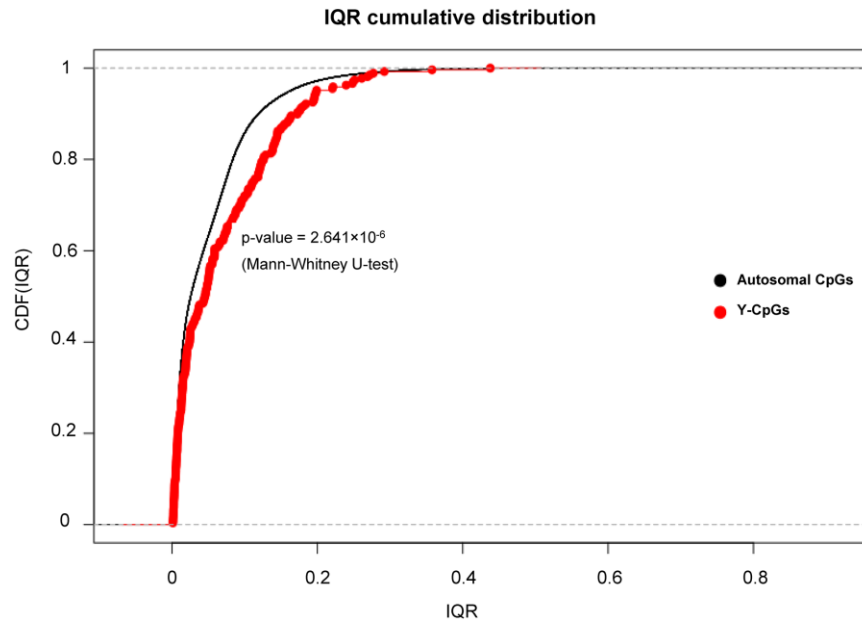
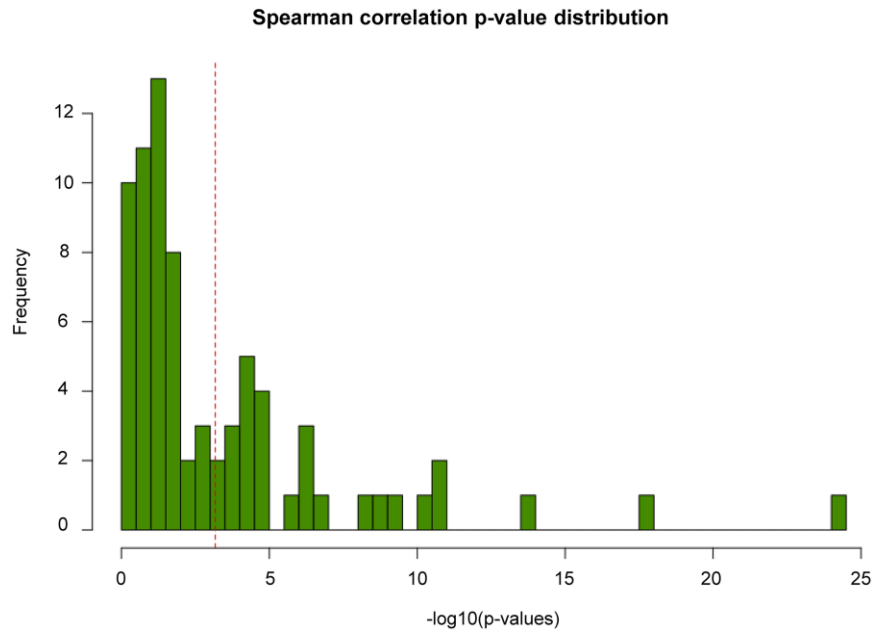


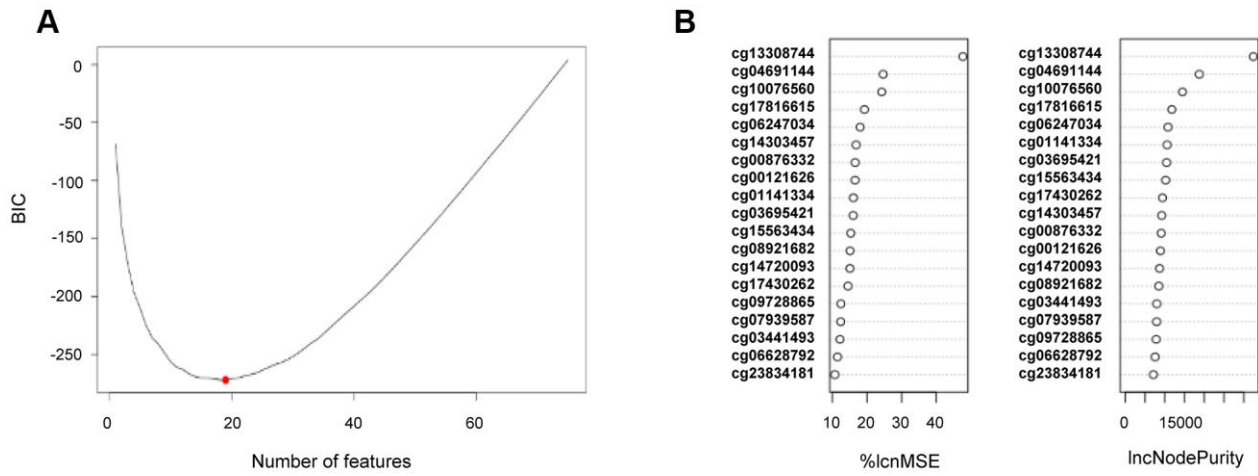
SUPPLEMENTARY FIGURES



Supplementary Figure 1. Cumulative density distribution (CDF) of inter-quantile range (IQR) for autosomal (black and Y-chromosome (red) probes.



Supplementary Figure 2. Distribution of $-\log_{10}(\text{p-values})$ based on Spearman correlation test for all 75 Y-CpGs following the IQR threshold of ≥ 0.1 . The dotted red line represents the $-\log_{10}$ of the Bonferroni-corrected degree of significance (α/n) = 0.05/75.



Supplementary Figure 3. Feature selection of age-predictive Y-CpGs. (A) Stepwise-feed forward feature selection with Bayesian Information Criterion (BIC), (B) Feature selection based on the Random Forest Regression model.