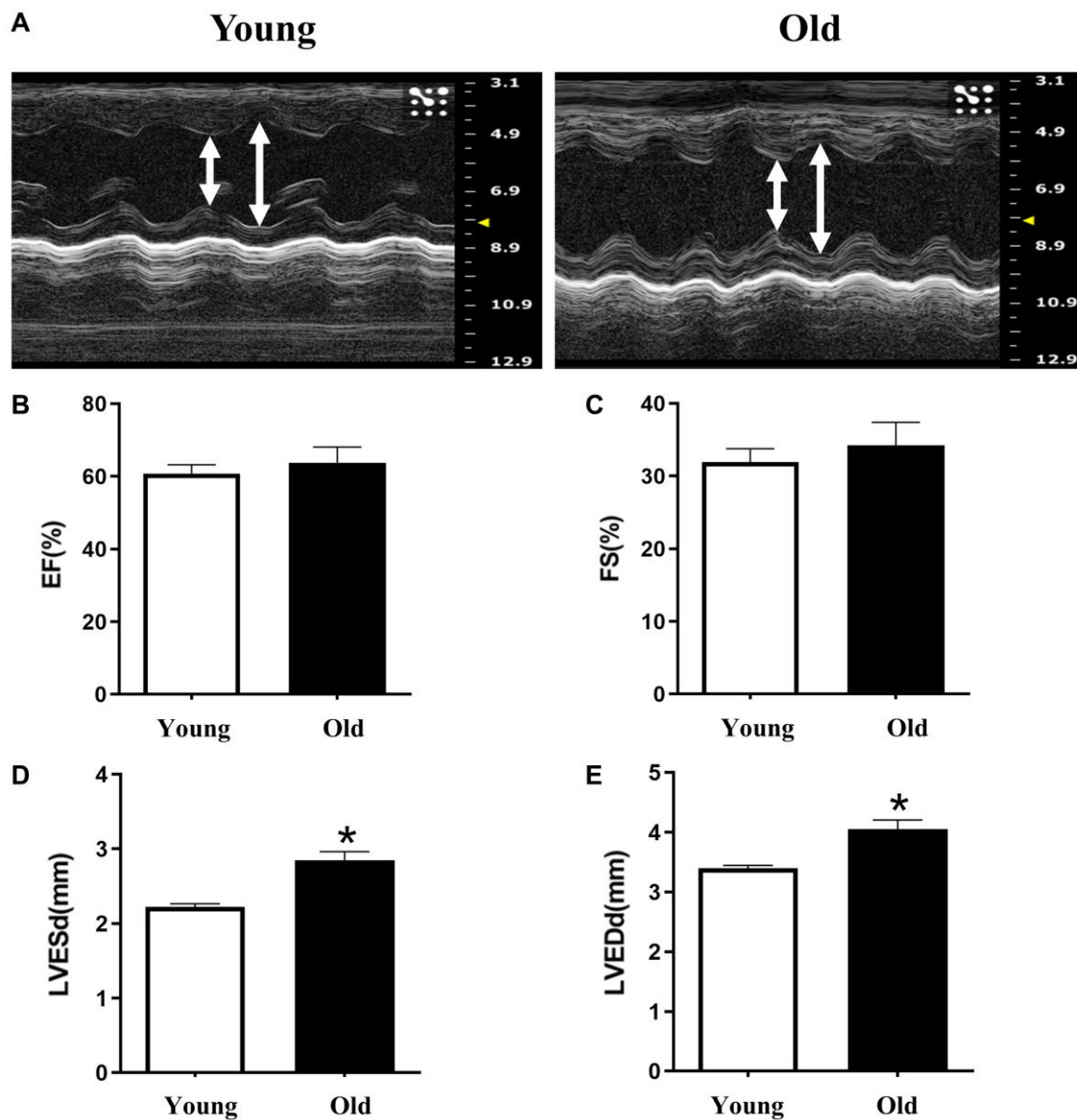


SUPPLEMENTARY FIGURE



Supplementary Figure 1. Aging induces cardiac dysfunction in mice. (A) Representative echocardiography photographs depicting heart function in the different experimental groups. (B–E) Quantitative analysis of heart function, as determined by percent fractional shortening (FS%), ejection fraction (EF%), left ventricular (LV) end-systolic diameter (LVESd), and LV end-diastolic diameter (LVEDd) ($n = 6$ mice per group). Data are mean \pm SEM. * $p < 0.05$ vs. young group.