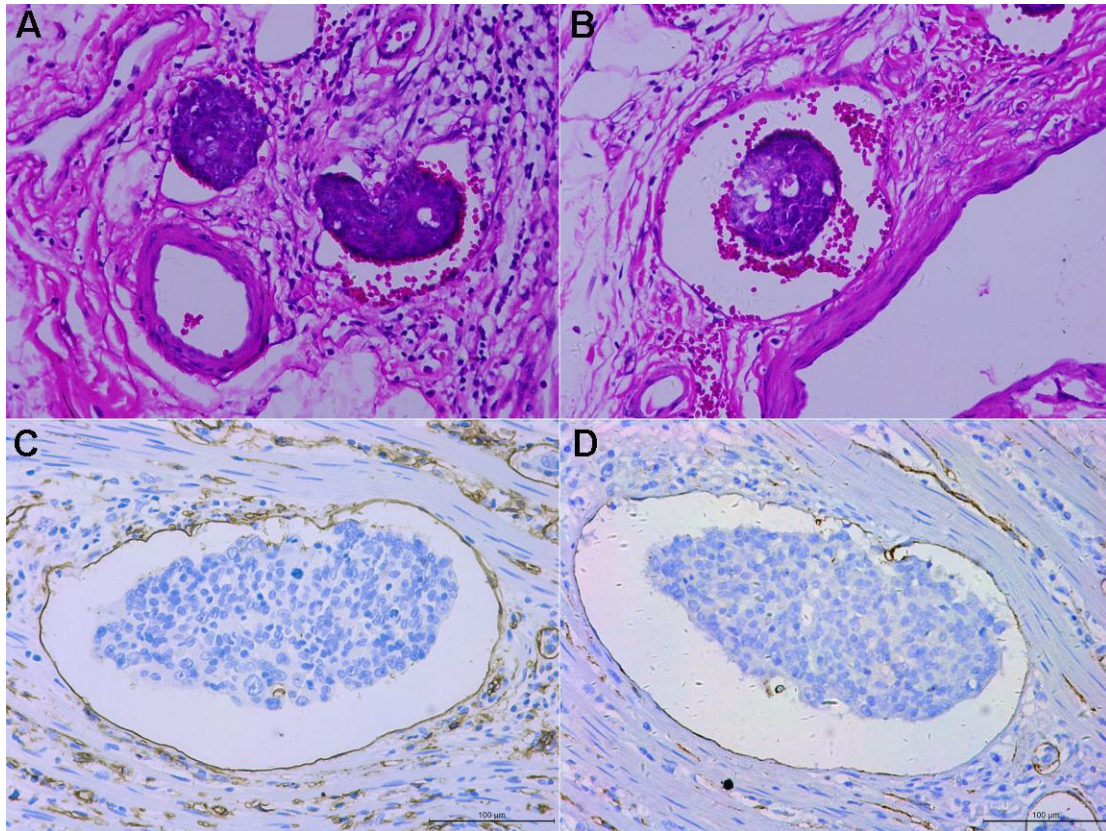


SUPPLEMENTARY FIGURE



Supplementary Figure 1. Intravascular emboli (IVE) diagnostic criteria by HE and IHC staining. (A, B) IVE diagnosed by HE staining: a cluster of tumor cells in an endothelium-lined space either surrounded by a rim of smooth muscle or containing red blood cells; (C, D) IVE diagnosed by IHC staining: blood vessel endothelium strongly stained by CD34 antibody but not stained by D2-40.