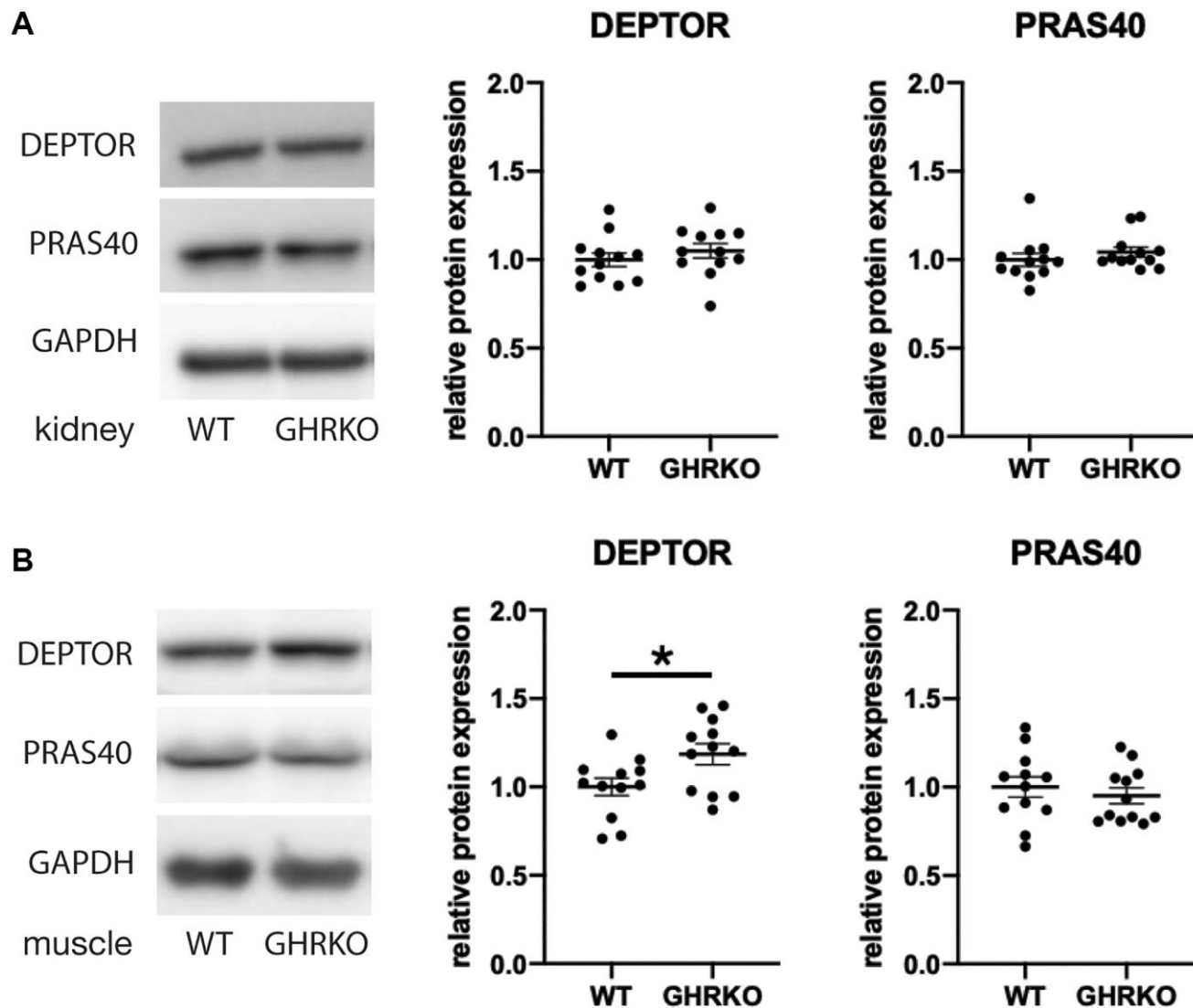
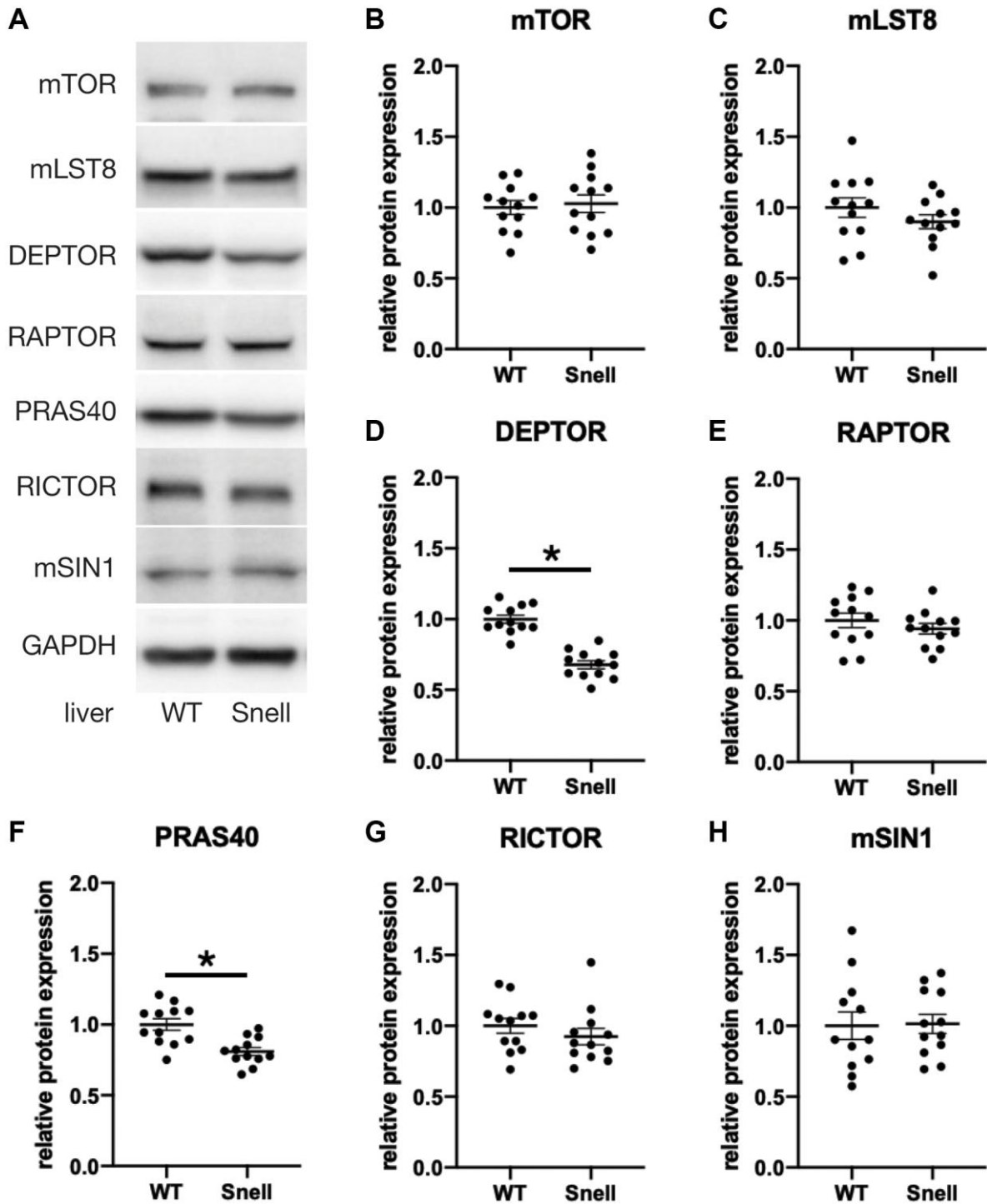


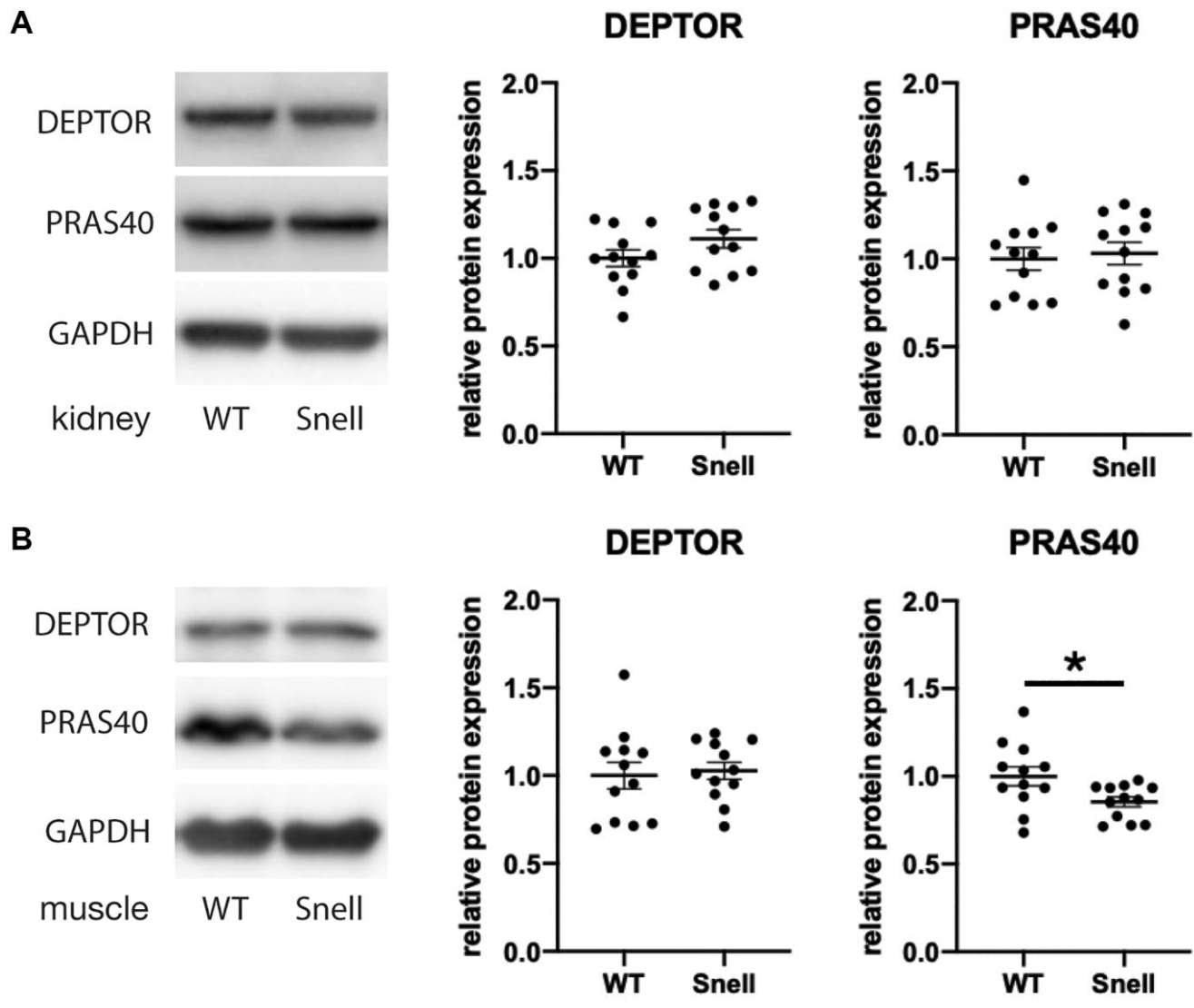
SUPPLEMENTARY FIGURES



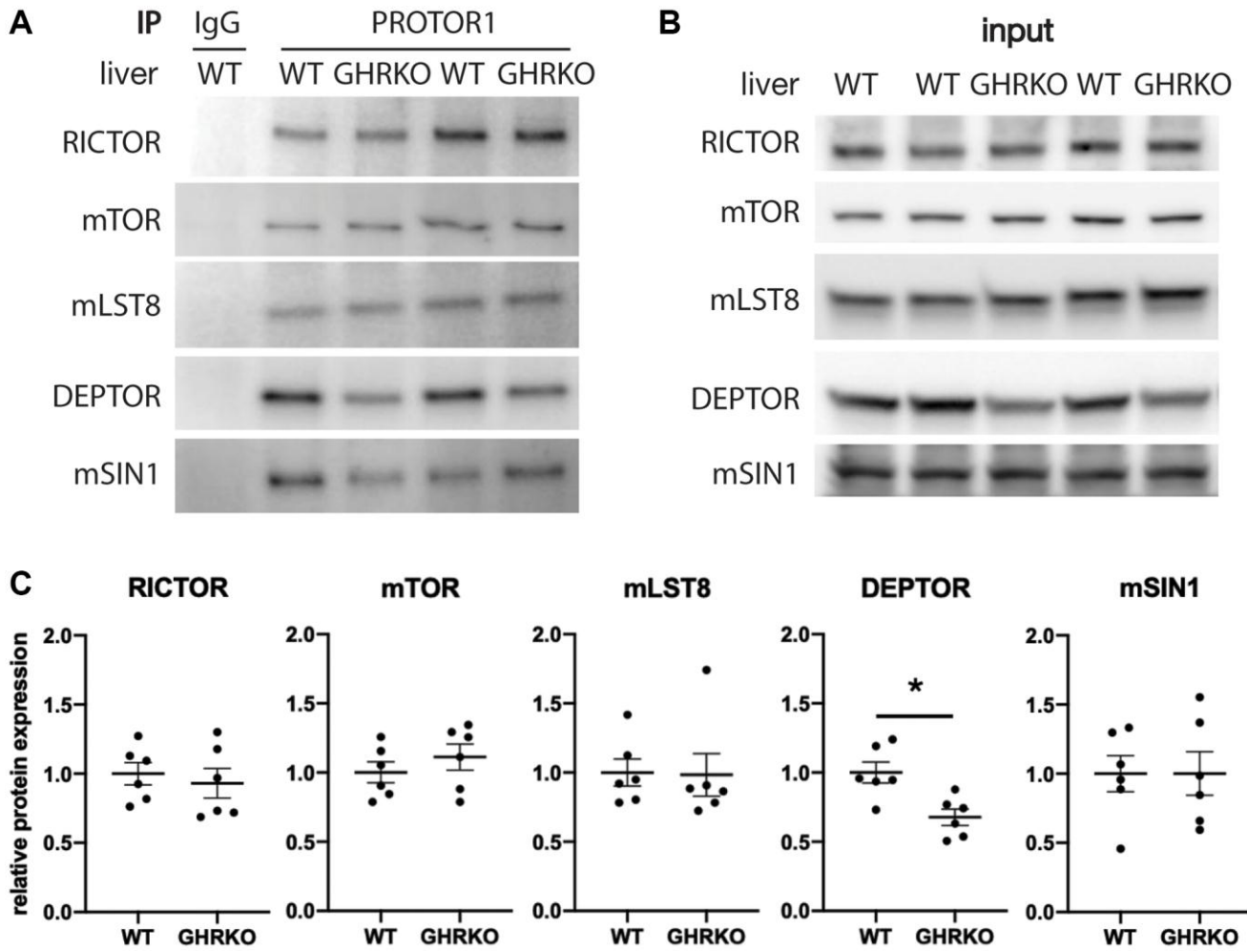
Supplementary Figure 1. DEPTOR and PRAS40 are not reduced in GHRKO kidney and muscle. (A) Protein expression of DEPTOR and PRAS40 in GHRKO kidney. (B) Protein expression of DEPTOR and PRAS40 in GHRKO muscle. $N = 6$ male and $N = 6$ female mice. * t -test $p < 0.05$.



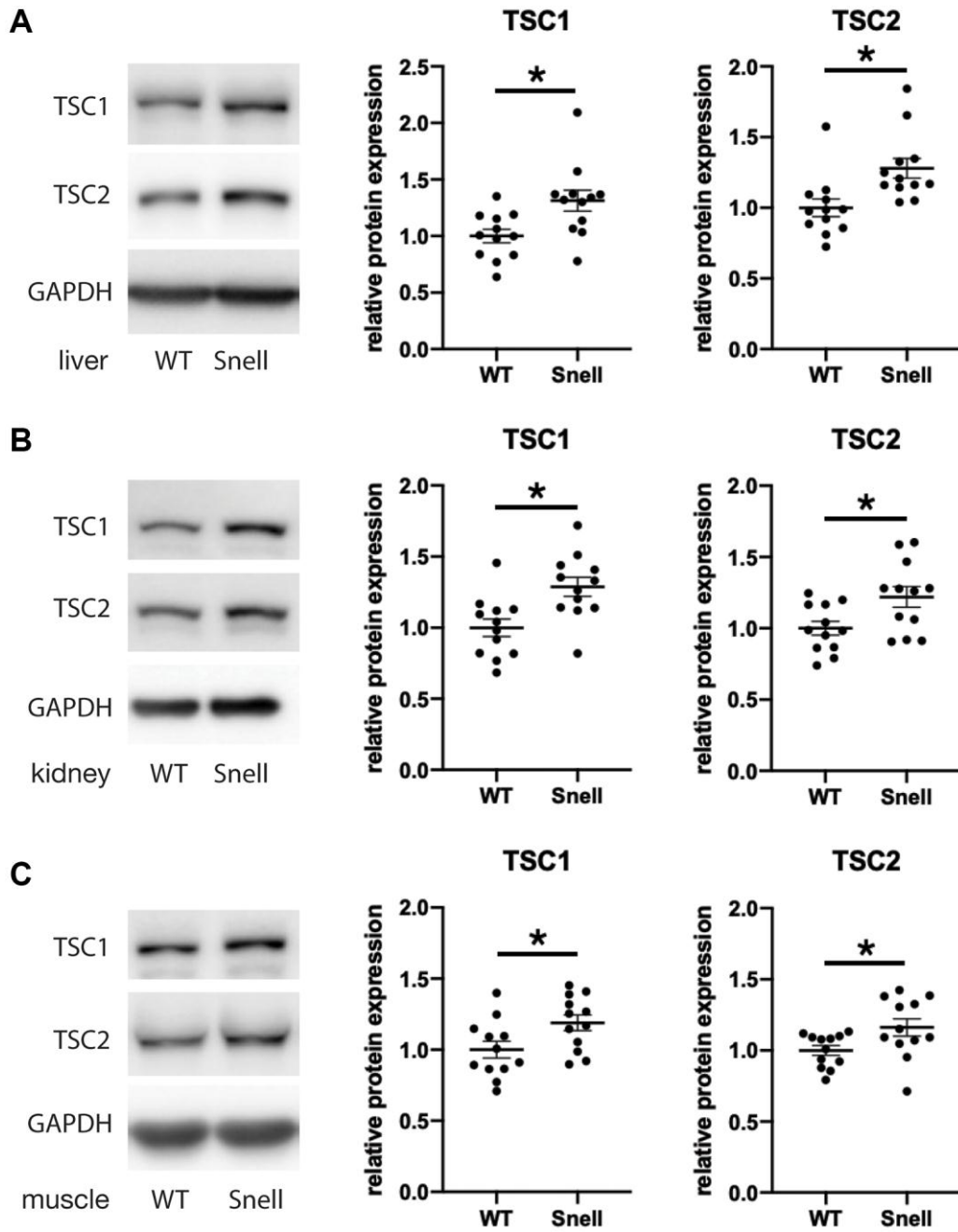
Supplementary Figure 2. Reduced DEPTOR and PRAS40 protein expression in Snell dwarf liver. (A) Representative immunoblots of protein expression for mTORC1 and mTORC2 components. (B–H) Quantification of protein expression, for $N = 6$ male and $N = 6$ female mice, with mean and SEM. * t -test $p < 0.05$.



Supplementary Figure 3. PRAS40 is reduced in Snell dwarf muscle. (A) Protein expression of DEPTOR and PRAS40 in Snell dwarf kidney. (B) Protein expression of DEPTOR and PRAS40 in Snell dwarf muscle. $N = 6$ male and $N = 6$ female mice. * t -test $p < 0.05$.



Supplementary Figure 4. Unchanged PROTOR1 level in mTORC2. (A) Representative immunoblots of the mTORC2 components from samples immunoprecipitated with PROTOR1 antibody. (B) Input samples for (A). (C) Quantification of proteins in experiments of the kind shown in (A). $N = 6$. * t -test $p < 0.05$.



Supplementary Figure 5. TSC1 and TSC2 are increased in Snell dwarf tissues. TSC1 and TSC2 protein expression in Snell dwarf liver (A), kidney (B), and muscle (C). $N = 6$ male and $N = 6$ female mice. * t -test $p < 0.05$.