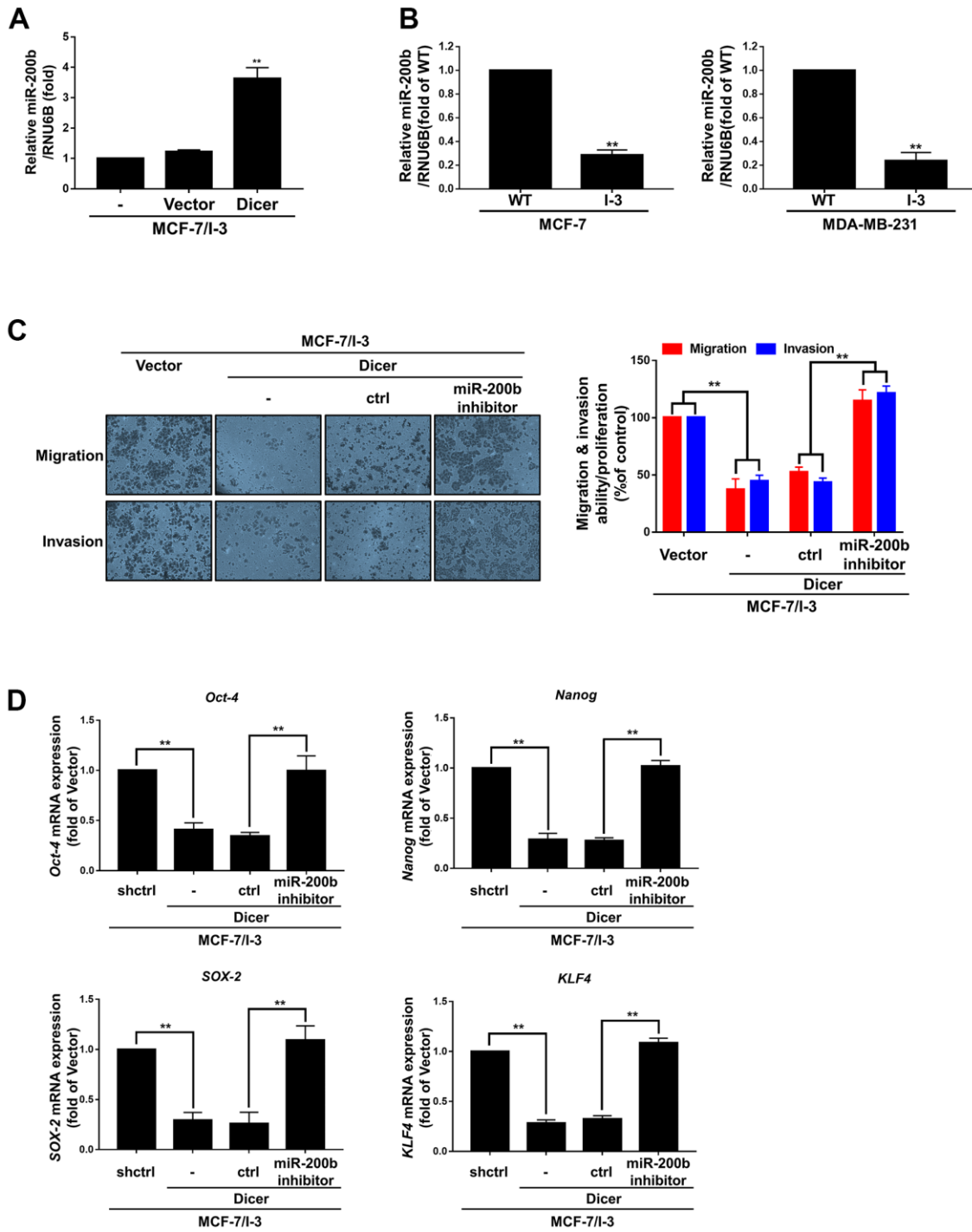


SUPPLEMENTARY FIGURE



**Supplementary Figure 1. Dicer-mediated migration/invasion and CSCs properties of breast cancer cells are regulated by miR-200b.** (A) Analysis of miR-200b expression in Dicer-overexpressing MCF-7/I-3 cells through qRT-PCR. (B) Analysis of miR-200b expression in indicated cells. (C) The Transwell assay was performed to measure the migration and invasion of the indicated cells. (D) Expression of *Oct-4*, *Nanog*, *SOX-2*, and *KLF4* mRNA in the indicated cells was analyzed through qRT-PCR. Data are presented as the mean  $\pm$  standard error mean of three independent experiments. \*\*P < 0.01.