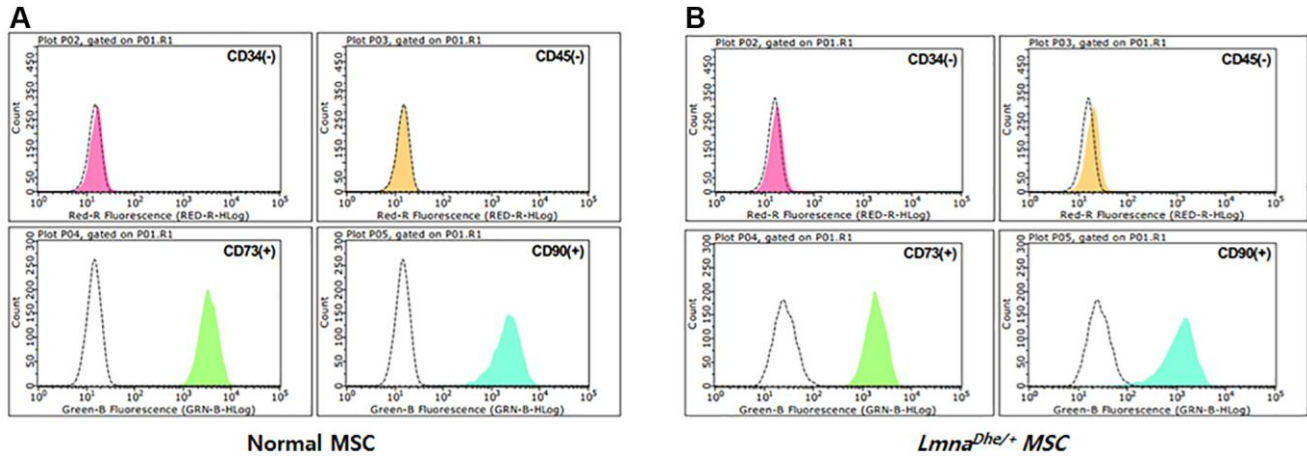


## SUPPLEMENTARY FIGURE



**Supplementary Figure 1. Characterization of BMMSCs.** Flow cytometric analysis of antigens CD34, CD45, CD73, and CD90. Negative control: CD34 and CD45; Positive control: CD73 and CD90. (A) Normal MSCs, (B) *Lmna*<sup>Dhe/+</sup> mutation MSCs.