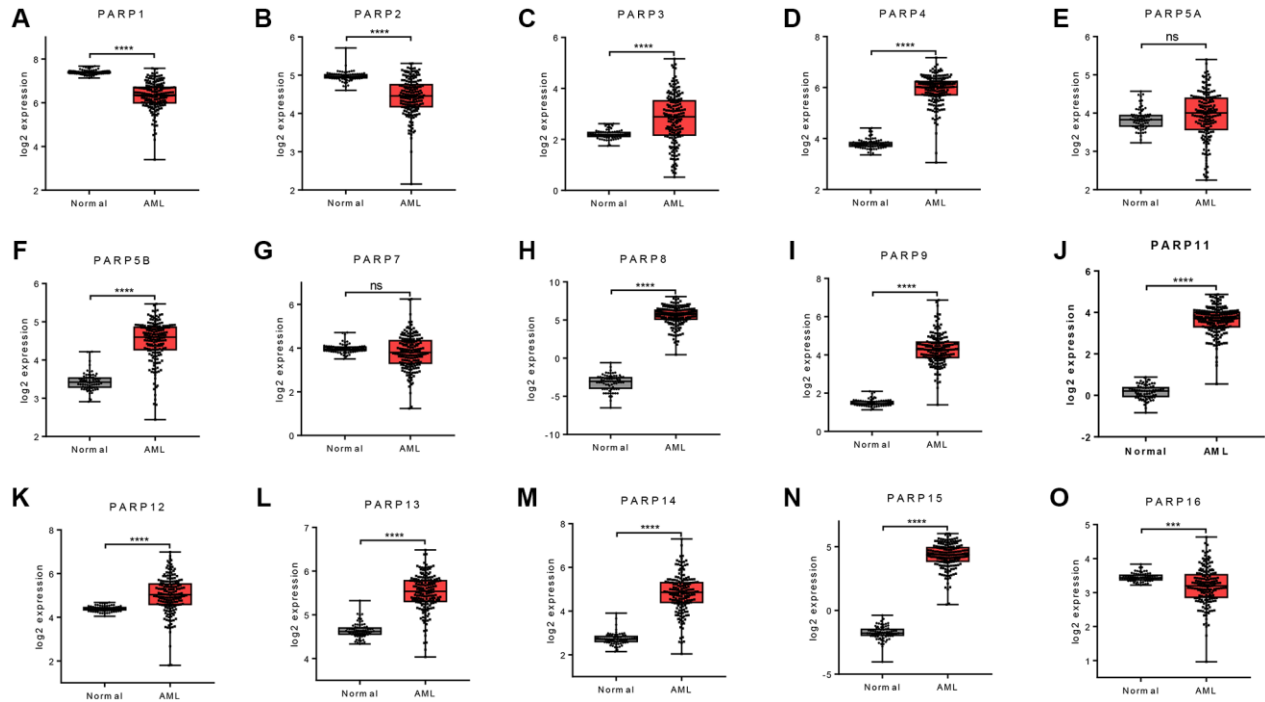
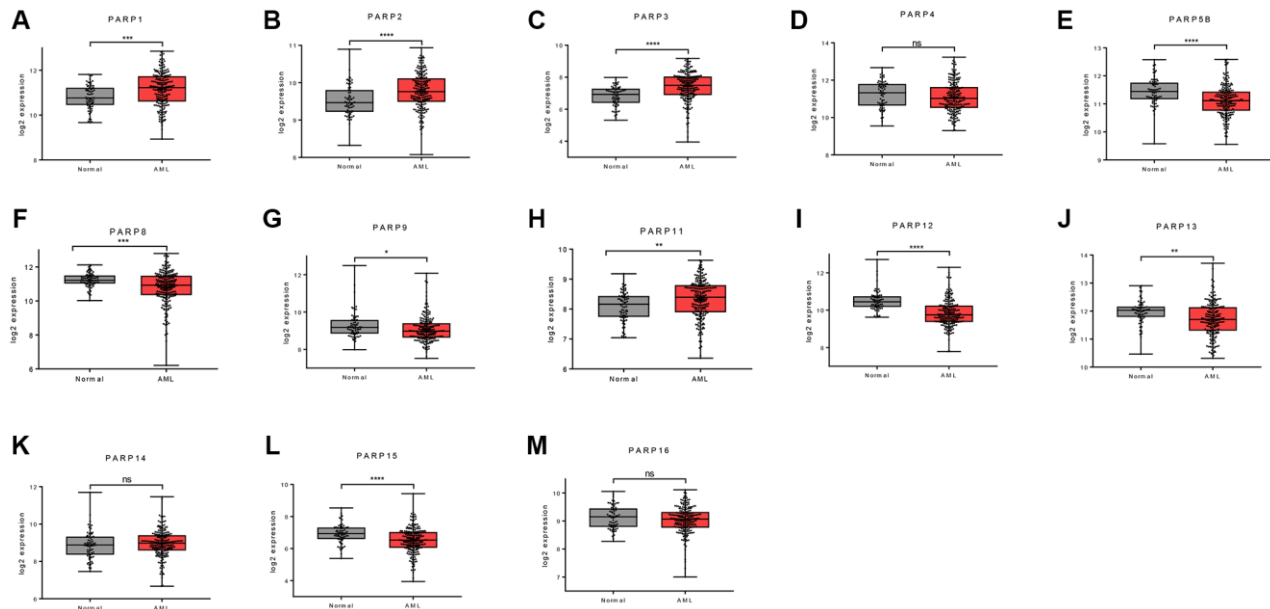


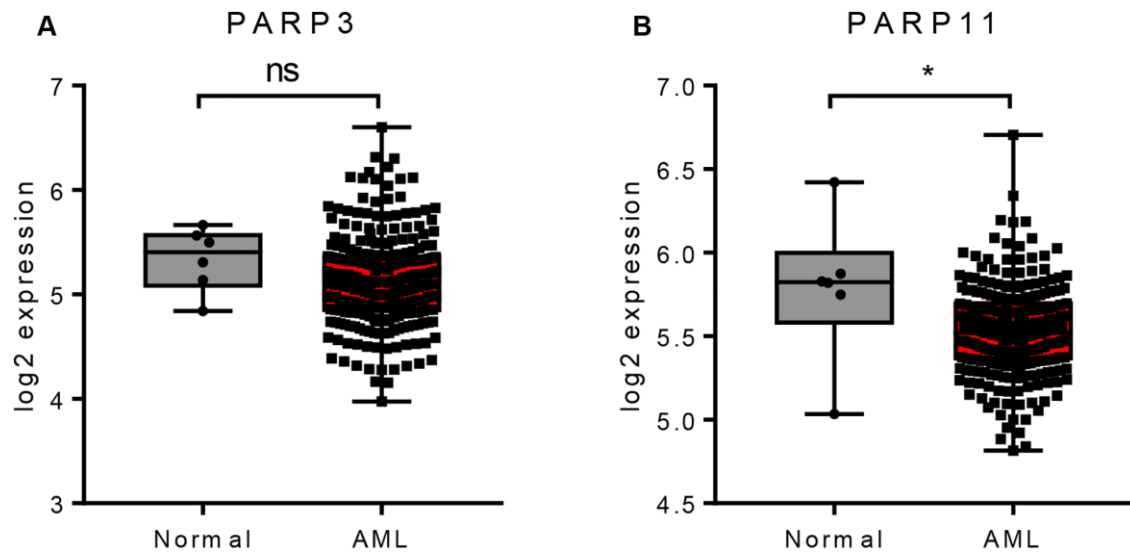
SUPPLEMENTARY FIGURES



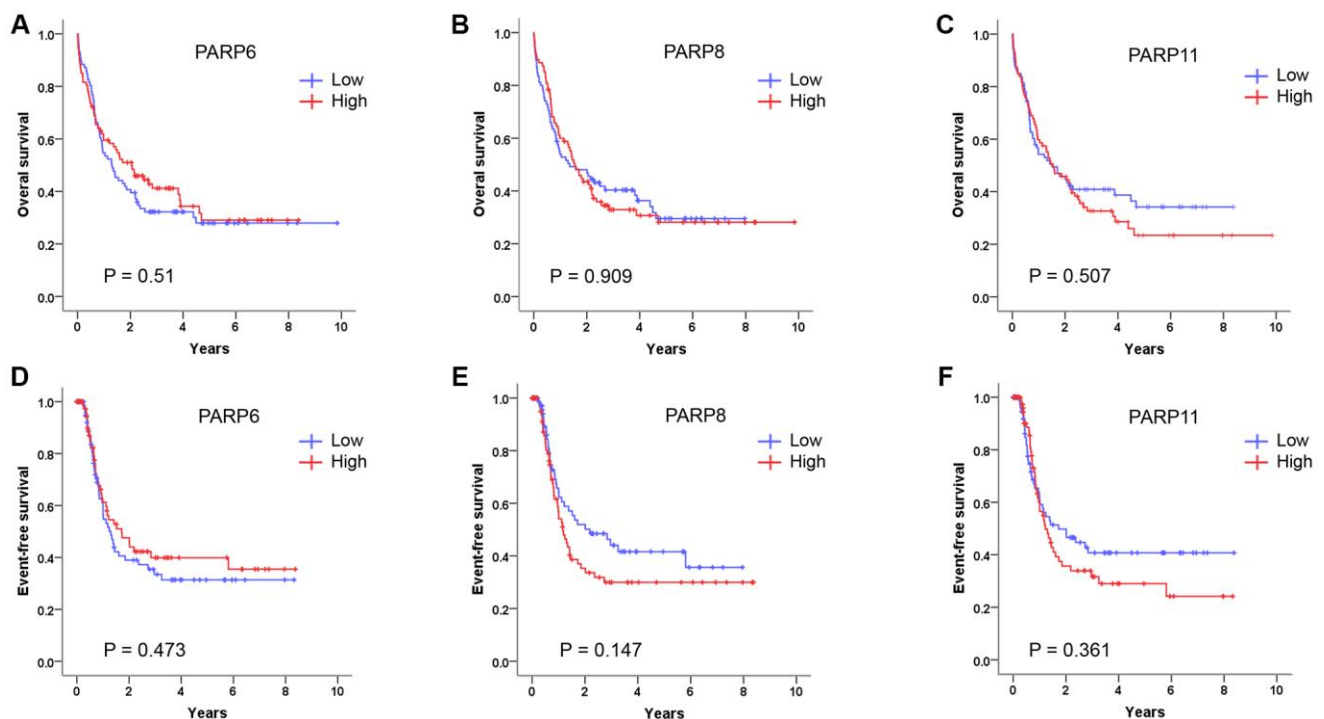
Supplementary Figure 1. Expression differences of PARPs between AML samples and normal controls in TCGA versus GTEX datasets. (A) PARP1, (B) PARP2, (C) PARP3, (D) PARP4, (E) PARP5A, (F) PARP5B, (G) PARP7, (H) PARP8, (I) PARP9, (J) PARP11, (K) PARP12, (L) PARP13, (M) PARP14, (N) PARP15 and (O) PARP16. Unpaired *t* test was used to estimate the significance of expression difference. **P* < 0.05; ***P* < 0.01; ****P* < 0.005; *****P* < 0.001. Abbreviation: ns: not significant.



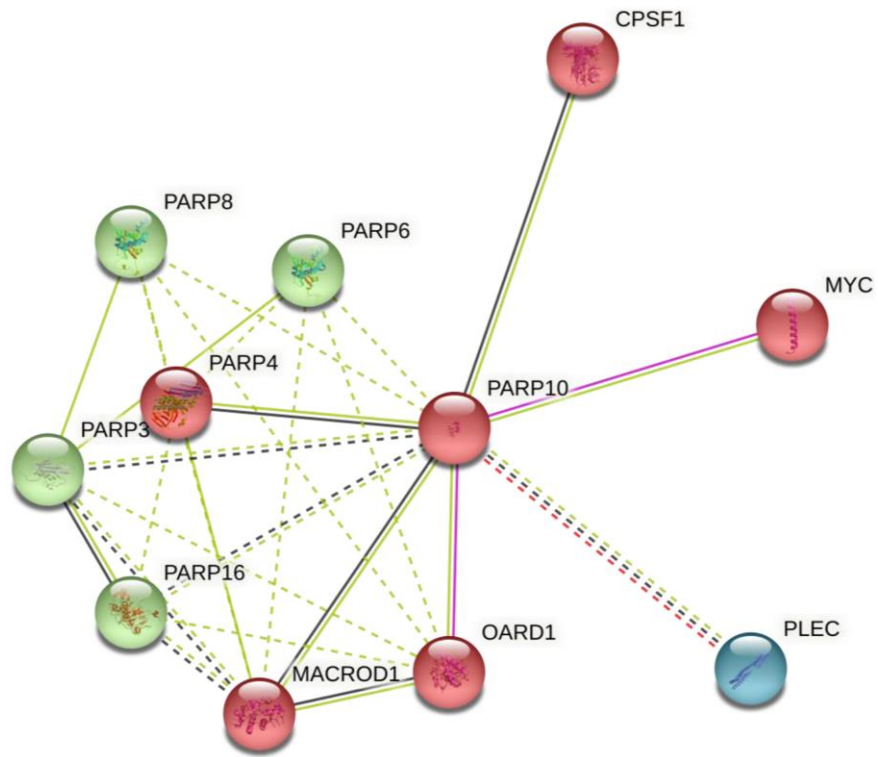
Supplementary Figure 2. Expression differences of PARPs between AML samples and normal controls in GSE15061 datasets. (A) PARP1, (B) PARP2, (C) PARP3, (D) PARP4, (E) PARP5B, (F) PARP8, (G) PARP9, (H) PARP11, (I) PARP12, (J) PARP13, (K) PARP14, (L) PARP15 and (M) PARP16. Unpaired *t* test was used to estimate the significance of expression difference. **P* < 0.05; ***P* < 0.01; ****P* < 0.005; *****P* < 0.001. Abbreviation: ns: not significant.



Supplementary Figure 3. Expression differences of *PARPs* between AML samples and normal controls in Bloodspot datasets. (A) *PARP3* and (B) *PARP11*. Unpaired *t* test was used to estimate the significance of expression difference. **P* < 0.05. Abbreviation: ns: not significant.



Supplementary Figure 4. Survival analysis of AML patients according to *PARPs* expression. Overall survival rate of AML patients with high expression versus low expression of *PARPs*, (A) *PARP6*, (B) *PARP8* and (C) *PARP11*. Event-free survival rate of AML patients with high expression versus low expression of *PARPs*, (D) *PARP6*, (E) *PARP8* and (F) *PARP11*. Log-rank test was used to generate the survival curves and analyze the survival difference between the high and the low expression groups.



Supplementary Figure 5. STRING protein–protein interaction network analysis of *PARP10*.