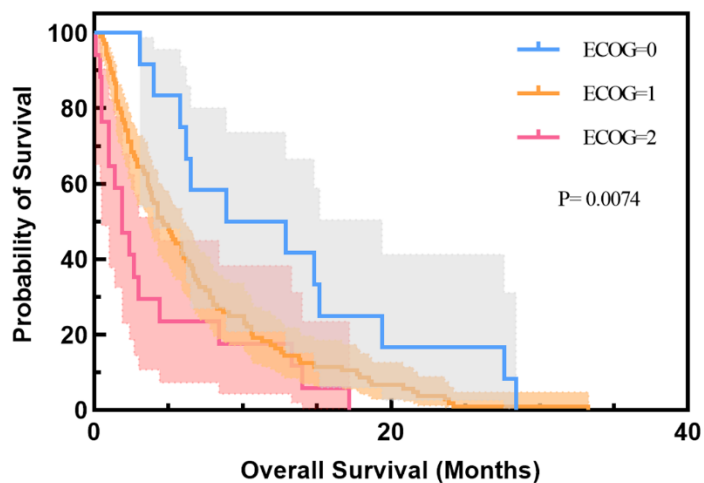
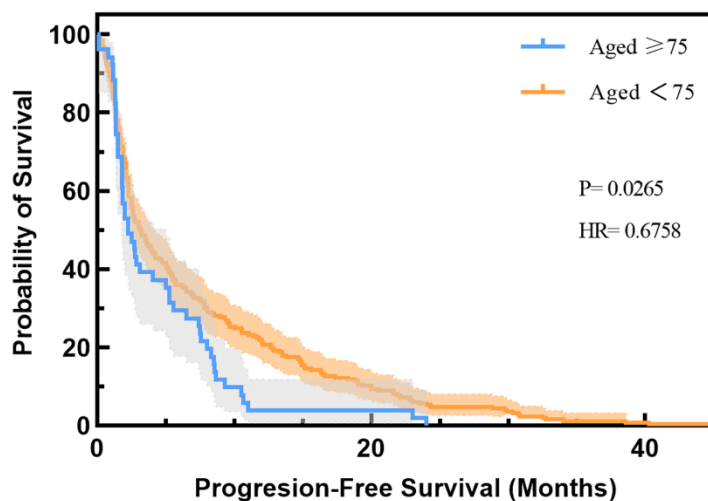


SUPPLEMENTARY FIGURES

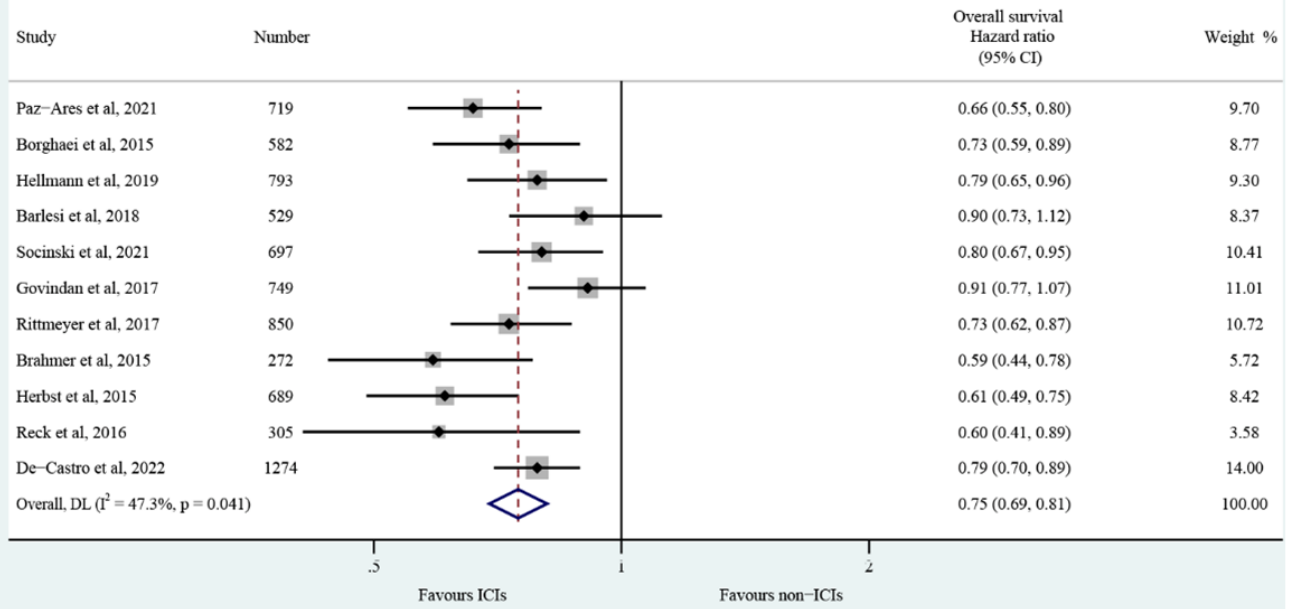


Supplementary Figure 1. Overall survival of NSCLC patients treated with ICIs based on ECOG PS in the cBio database.

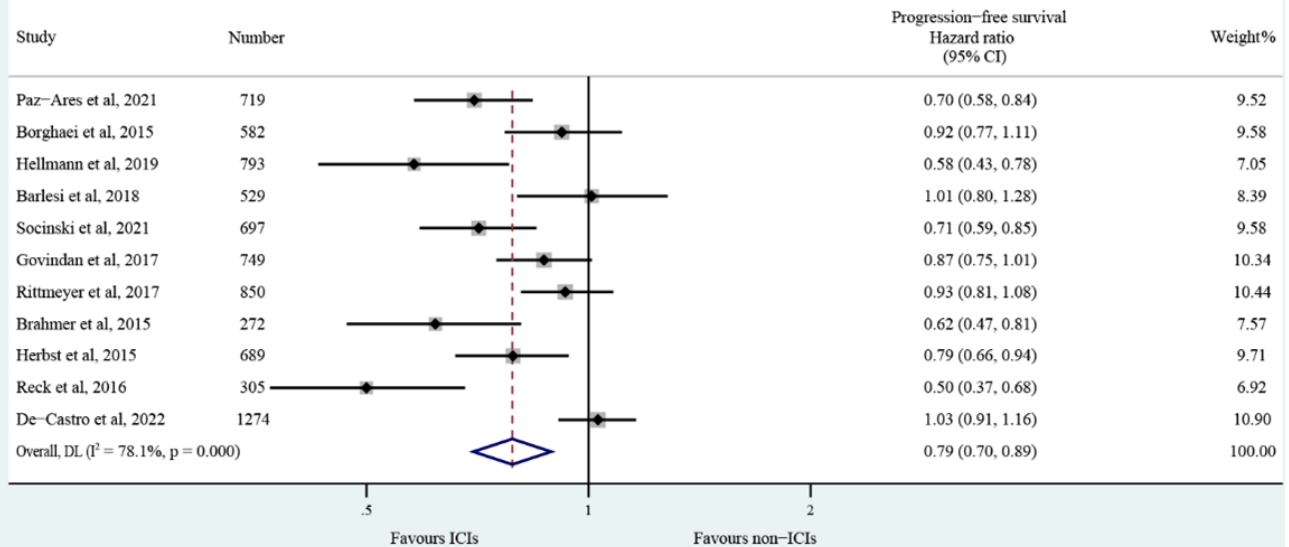


Supplementary Figure 2. Progression-free survival of NSCLC patients treated with ICIs based on age in the cBio database.

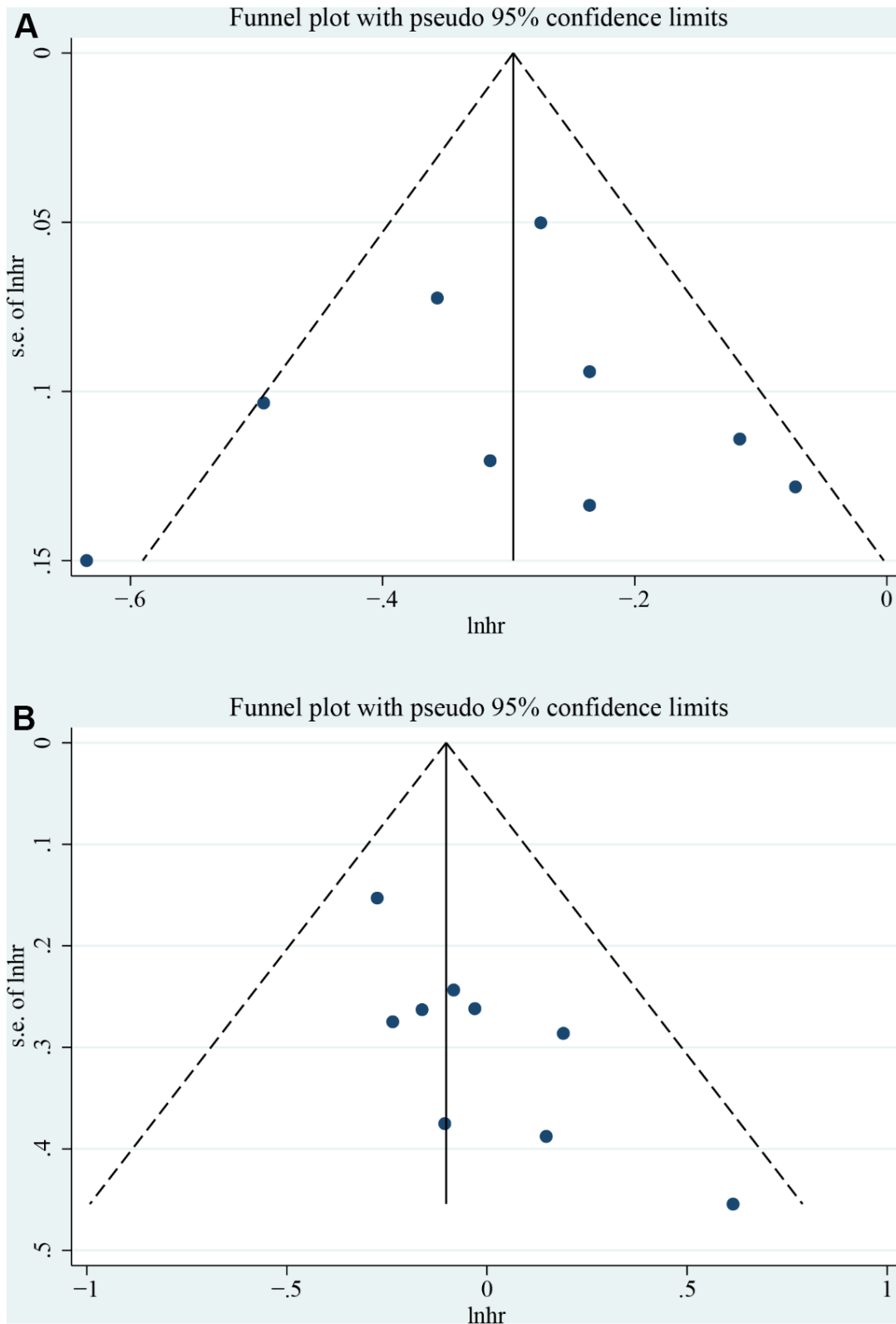
A



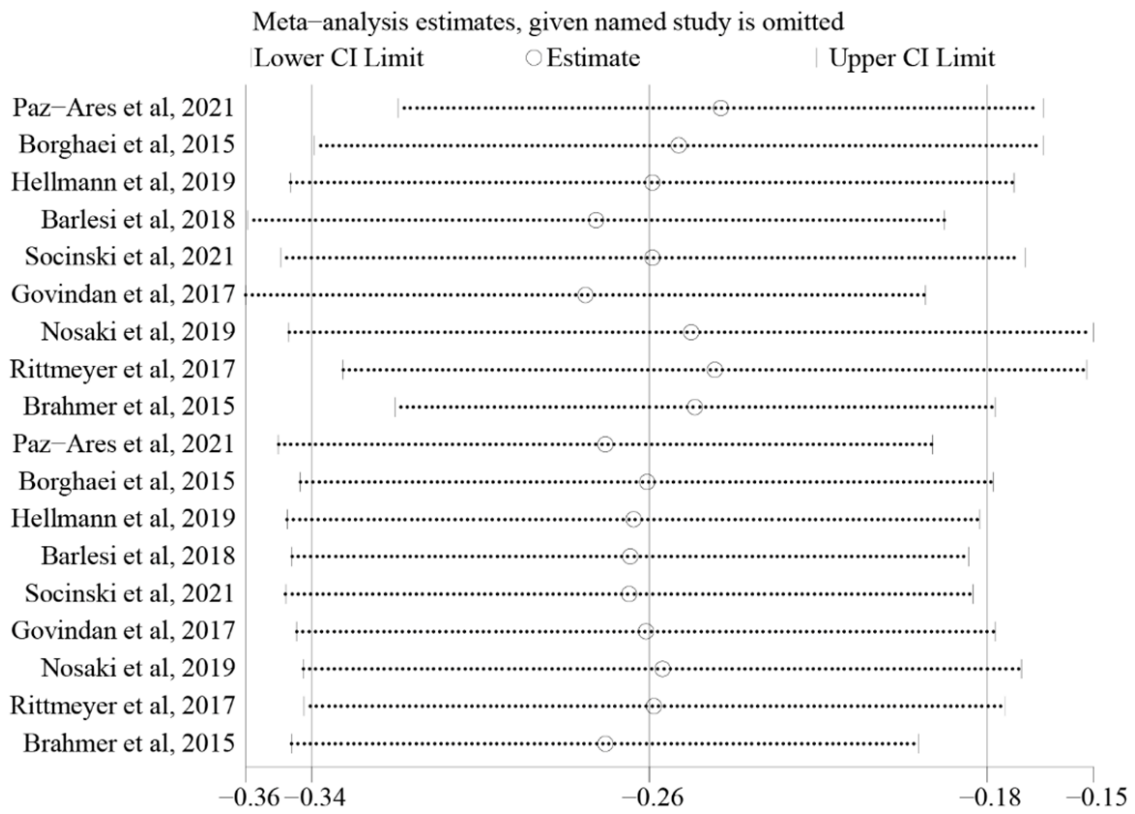
B



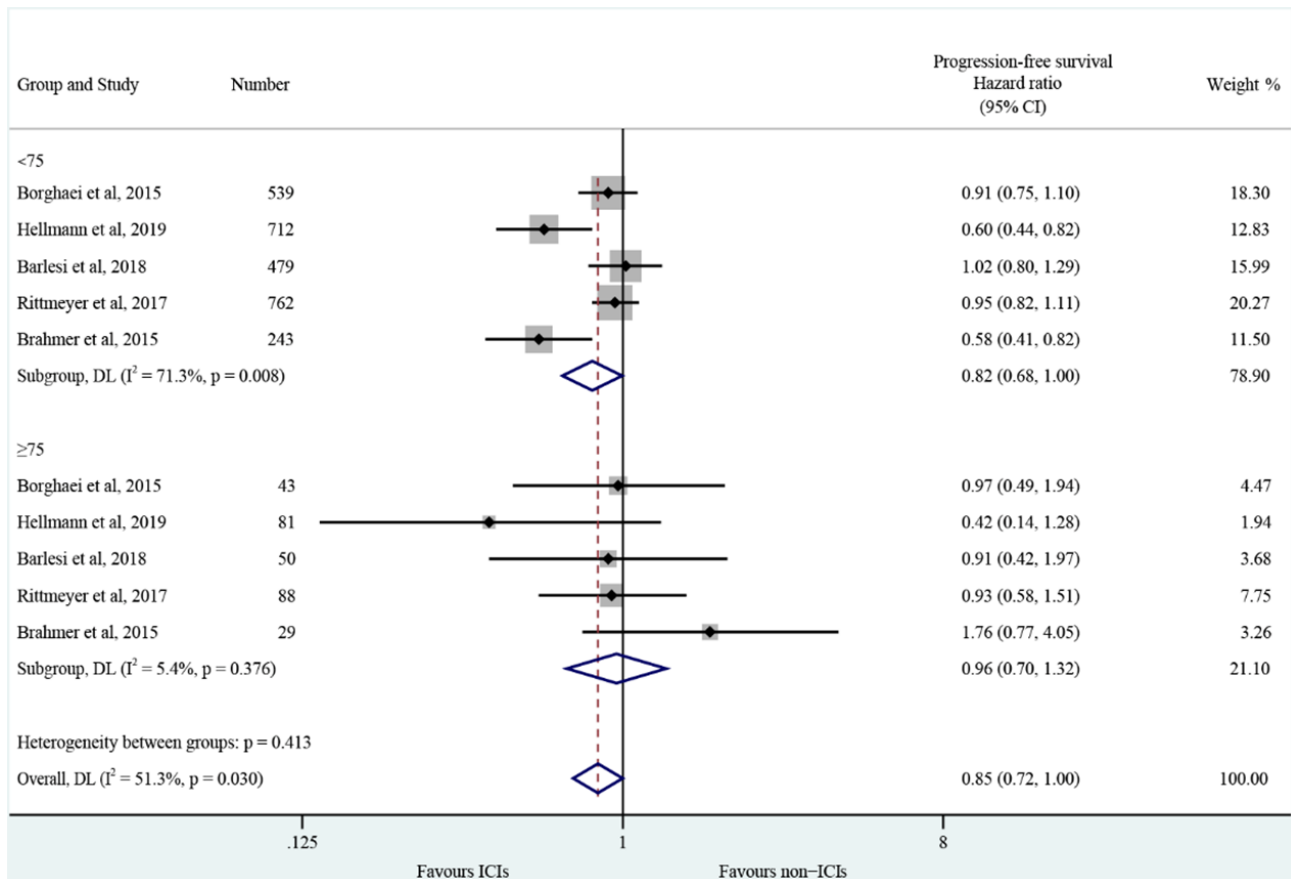
Supplemental Figure 3. Forest plot of the hazard ratio for overall survival (A) and progression-free survival (B). CI, confidence interval; ICIs, immune checkpoint inhibitors.



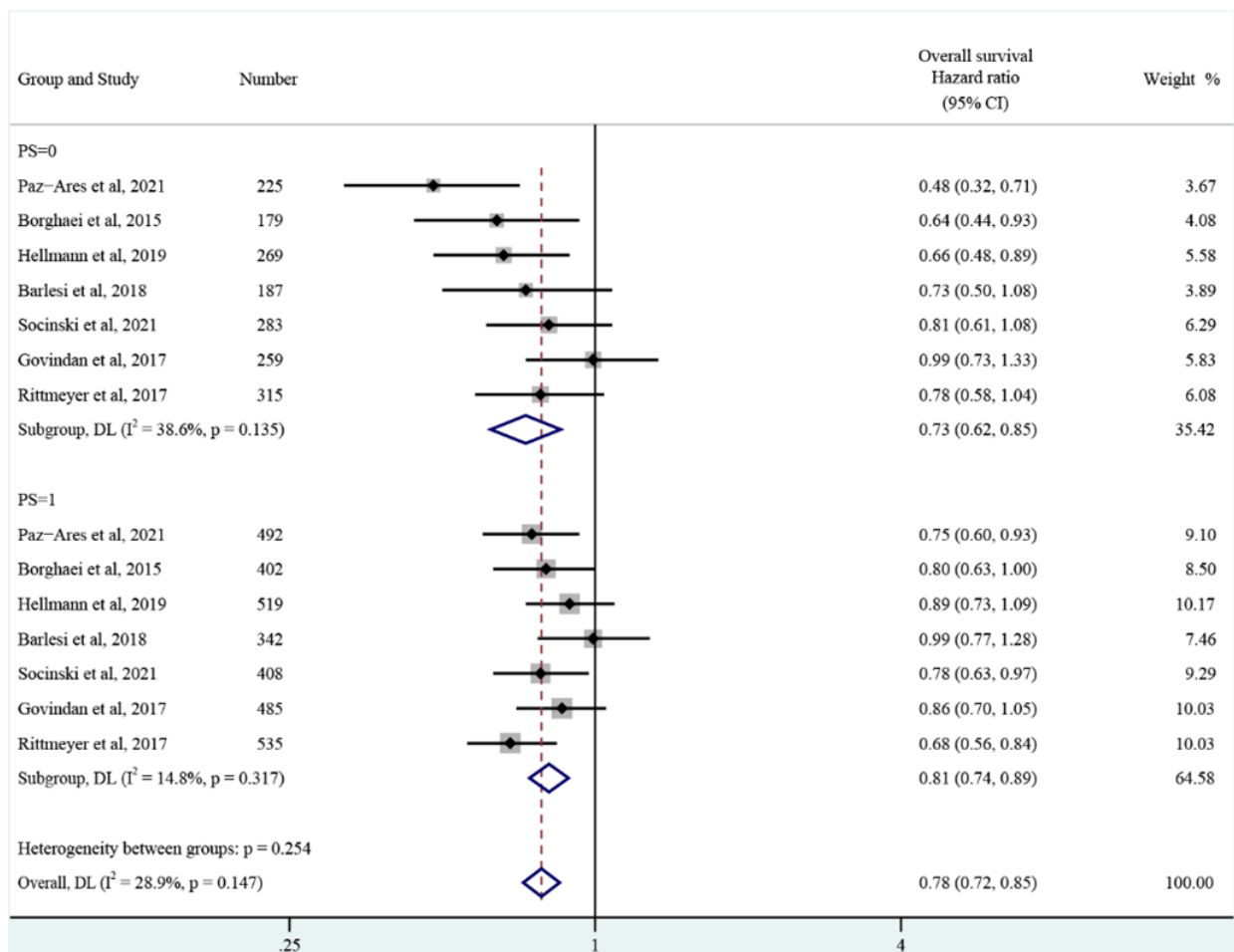
Supplementary Figure 4. Funnel plots of efficacy by age < 75 years (A) and ≥ 75 years (B).



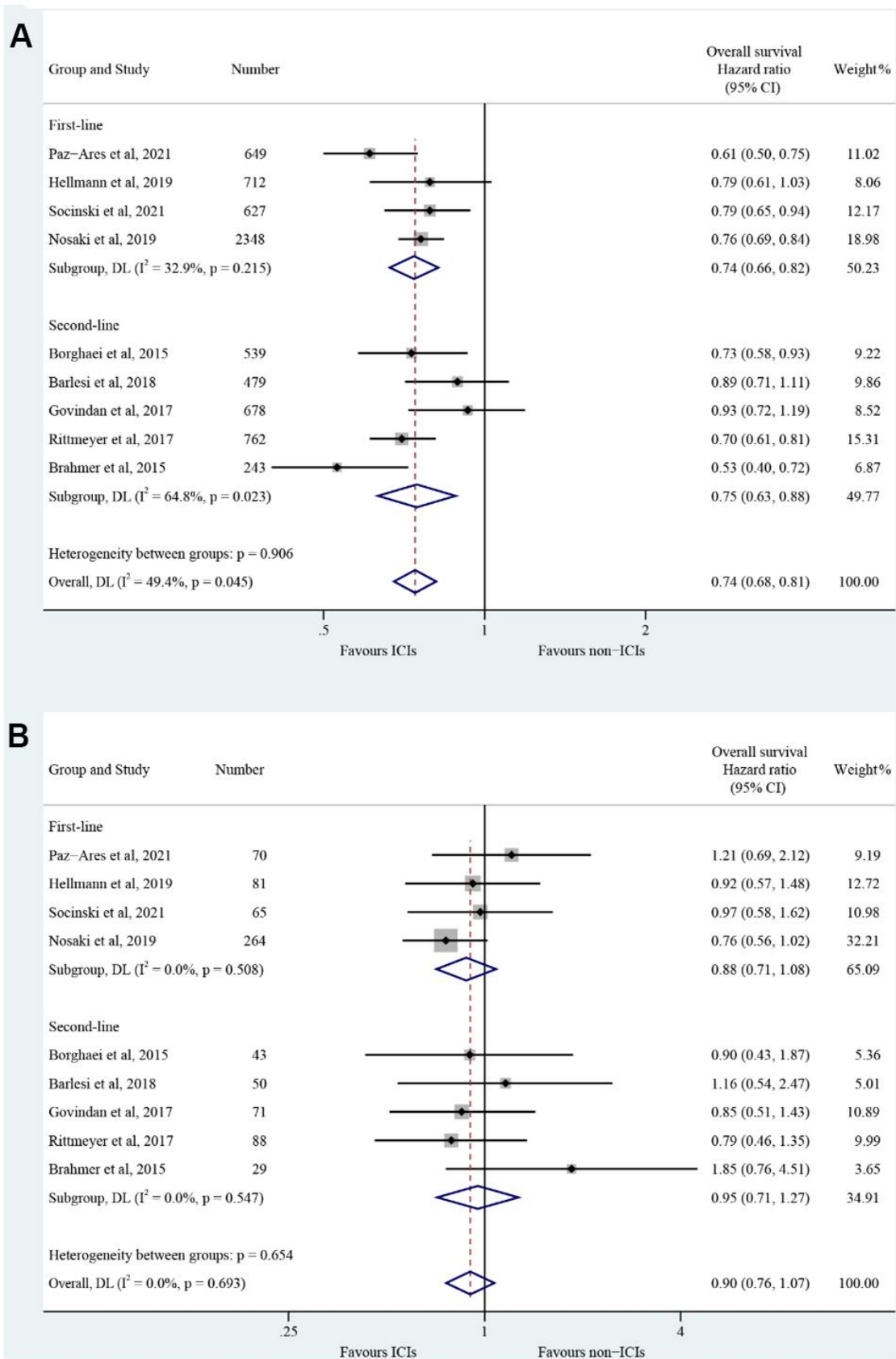
Supplementary Figure 5. Sensitivity analysis for OS at 75 years of age threshold. CI, confidence interval.



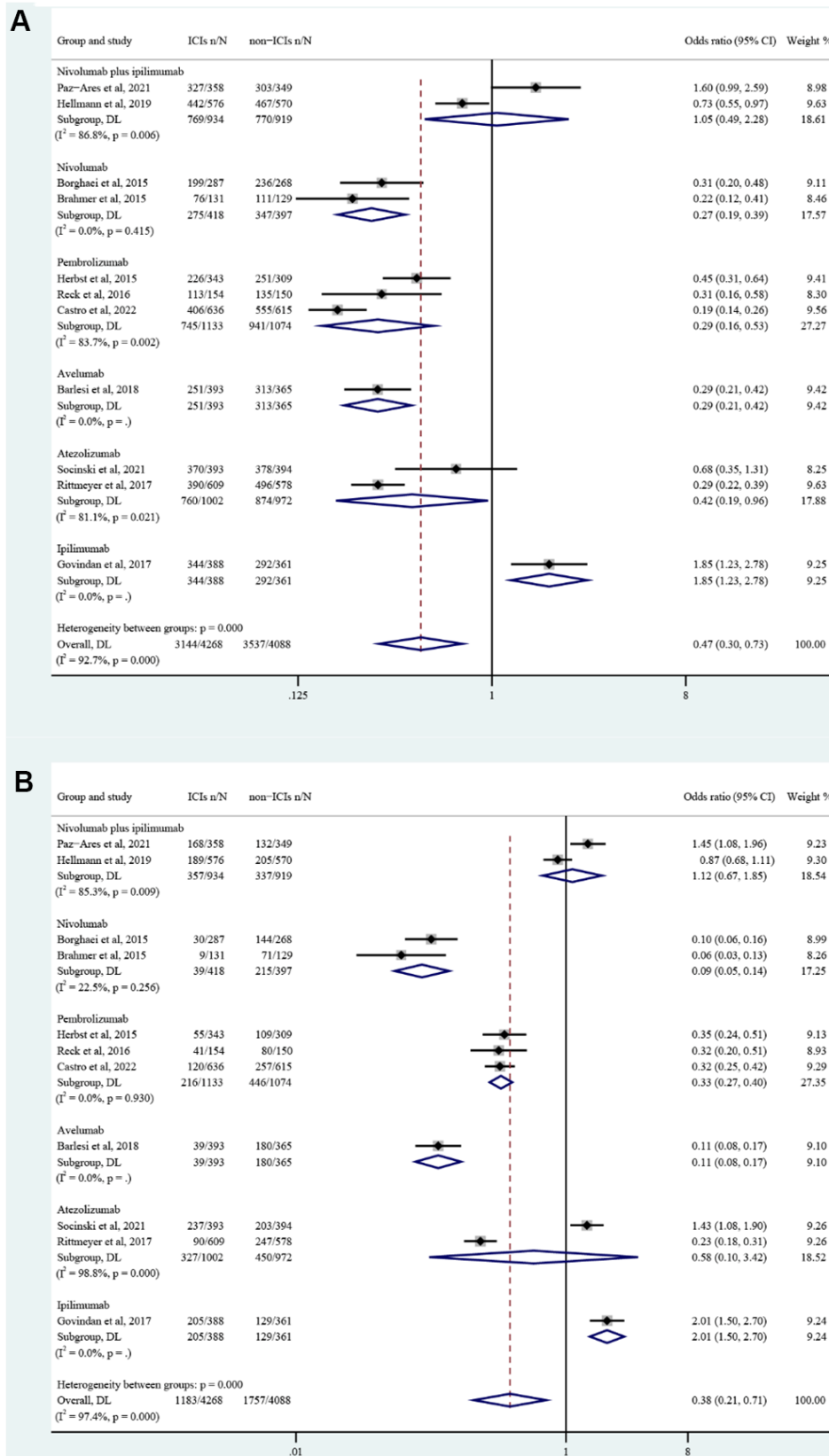
Supplementary Figure 6. Forest plots of progression-free survival by age < 75 years and ≥ 75 years. CI, confidence interval; ICIs, immune checkpoint inhibitors.



Supplementary Figure 7. Forest plots of overall survival by PS= 0 and PS= 1. CI, confidence interval; PS, performance status.



Supplementary Figure 8. Forest plots of aged <75 years old (A) and ≥75 years old (B) of overall survival in subgroups by treatment lines. CI, confidence interval; ICIs, immune checkpoint inhibitors.



Supplementary Figure 9. Forest plots of all-grade (A) and high-grade (B) TRAEs in subgroups by type of ICIs. CI, confidence interval; ICIs, immune checkpoint inhibitors.