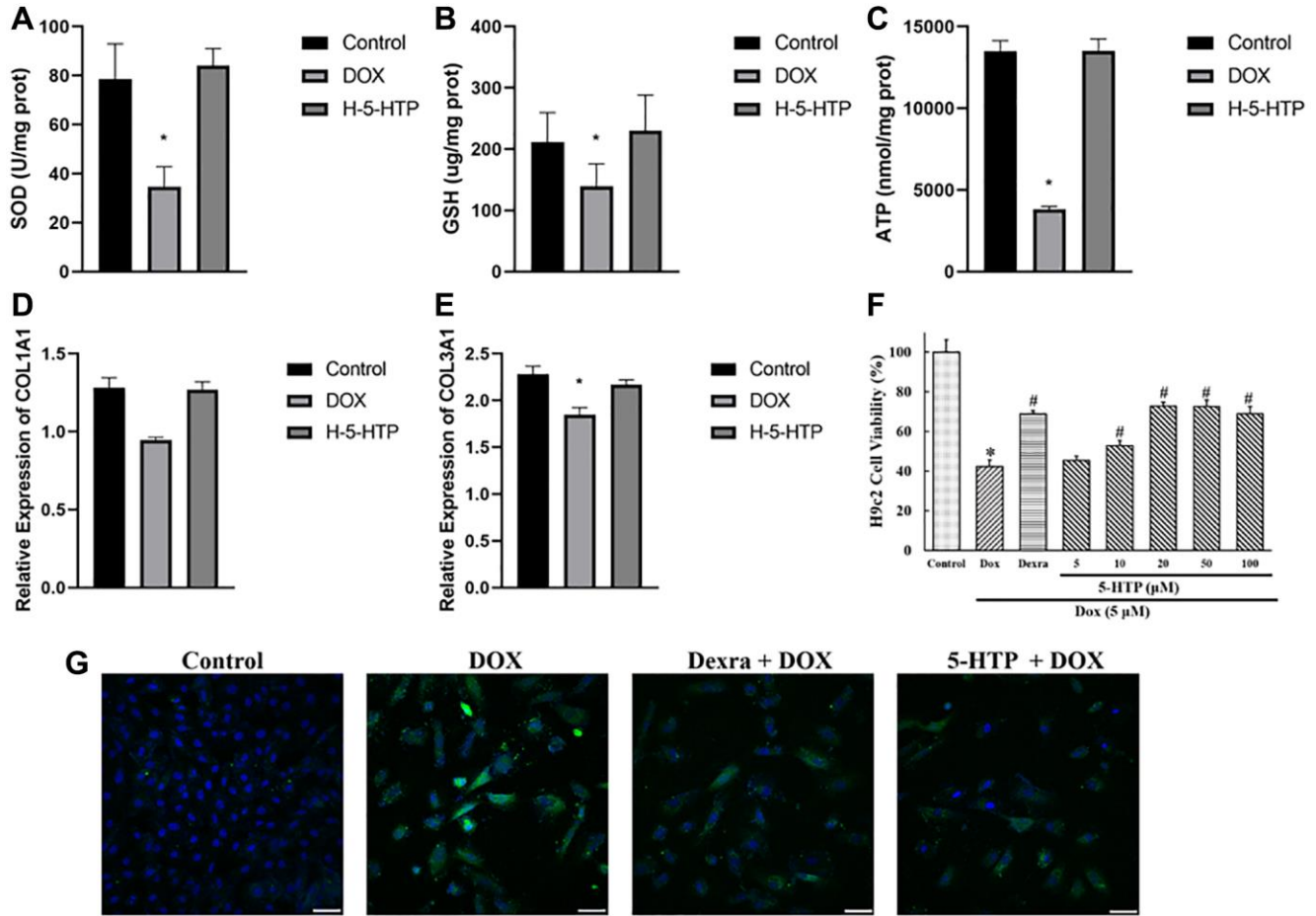


SUPPLEMENTARY FIGURE



Supplementary Figure 1. Effects of different treatments on myocardial cell biochemistry and gene expression. (A–C) Depict the concentrations of Superoxide Dismutase (SOD), Glutathione (GSH), and Adenosine Triphosphate (ATP), respectively, in myocardial cells following various treatments. (D, E) Depict the relative RNA expression levels of collagen type I alpha 1 chain (COL1A1) and collagen type III alpha 1 chain (COL3A1) after different treatments. (F) Illustrates the cell viability of myocardial cells as assessed by CCK-8 assay, including statistical significance of differences observed. (G) Presents immunofluorescence staining for ROS in myocardial cells subjected to different treatments, using a specific probe.